

WACHTKAMERBANK CURVY - Polypropylene

---



Houtfineer

---

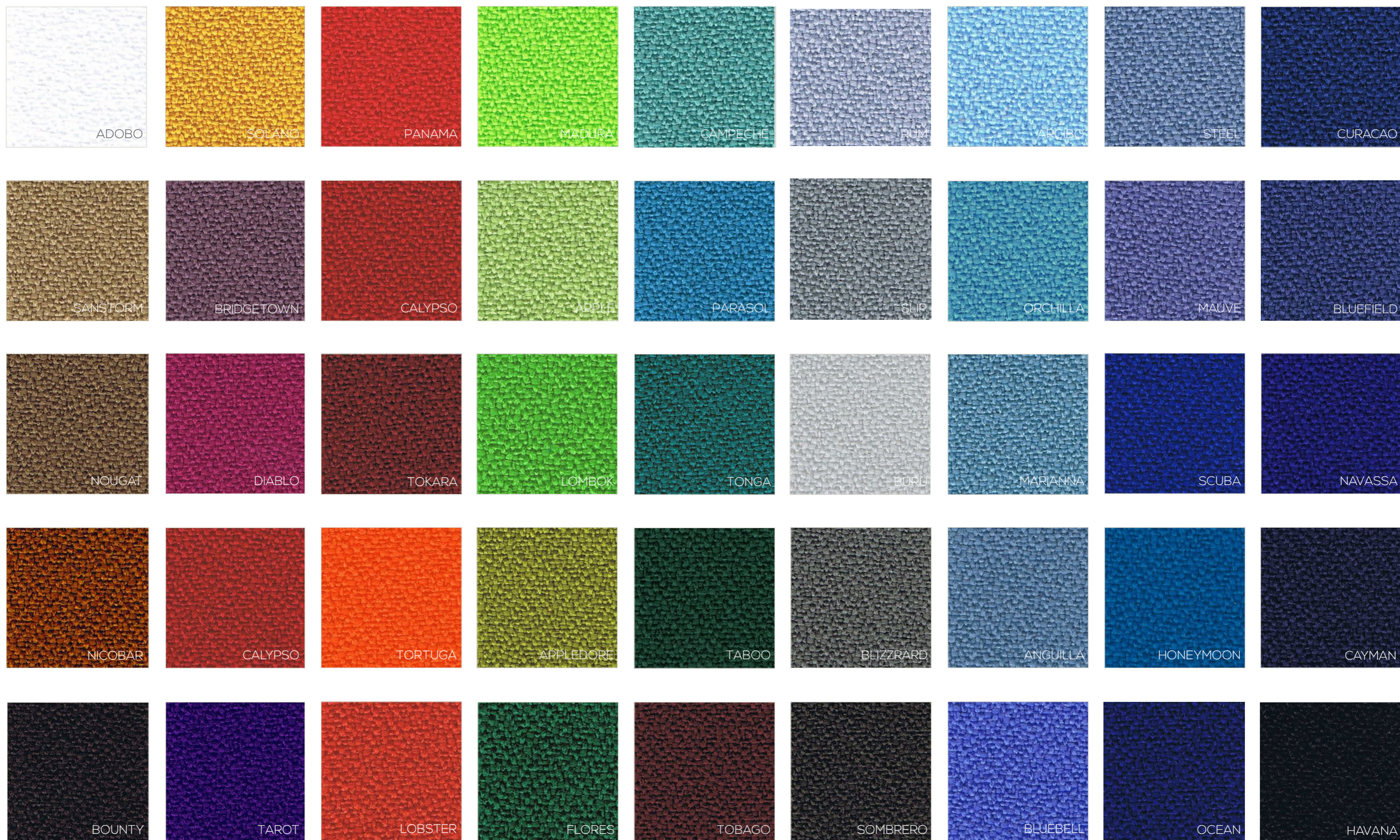


Stalen frame - Powder coating

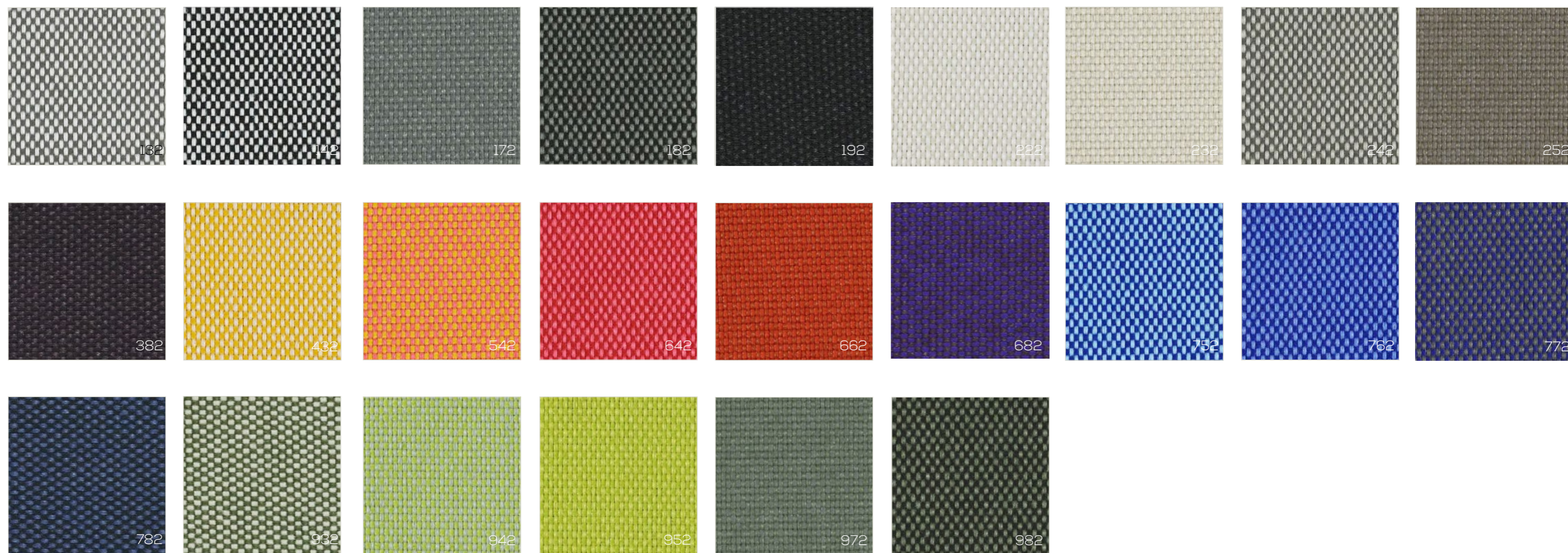
---



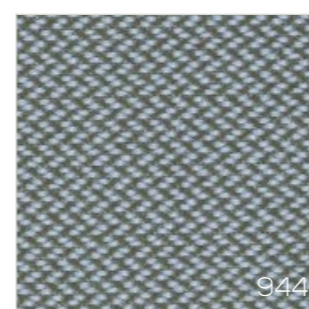
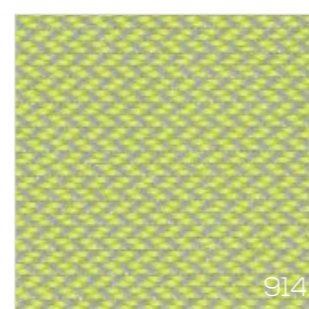
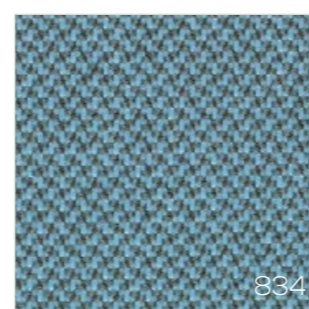
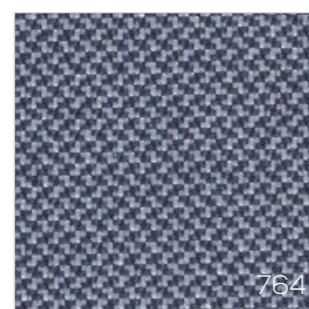
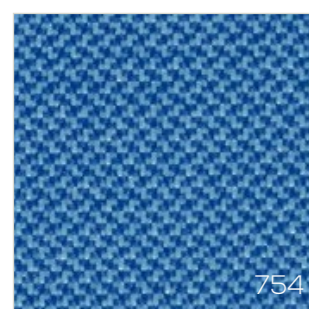
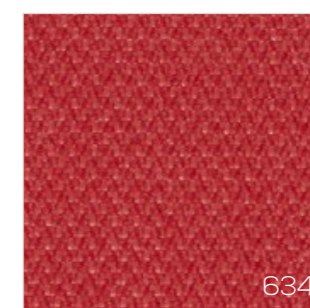
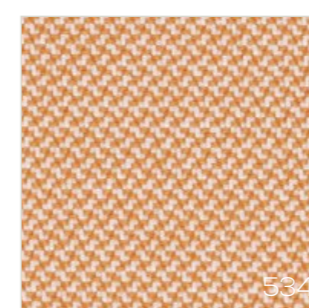
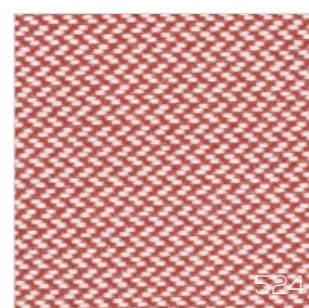
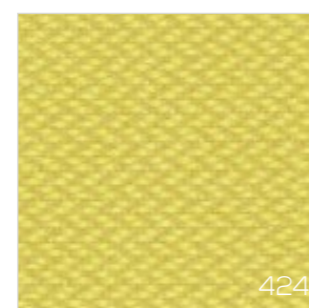
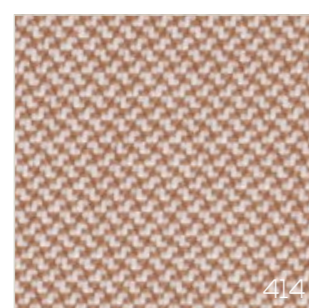
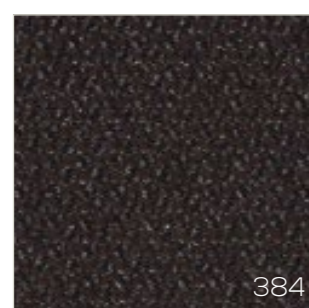
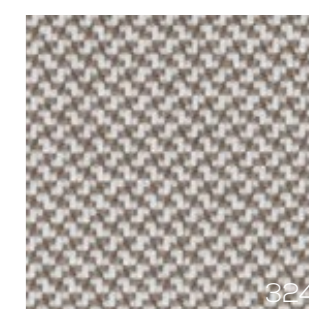
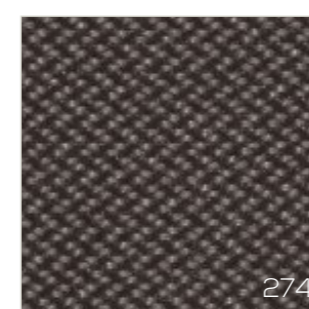
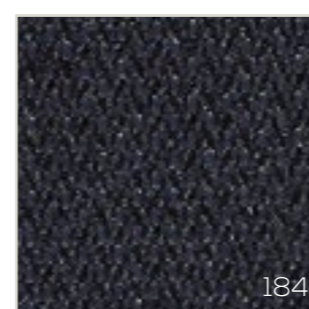
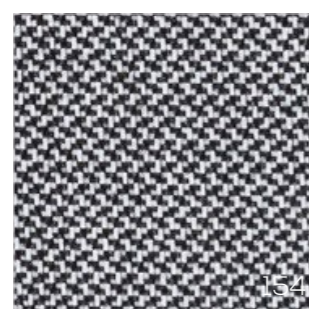
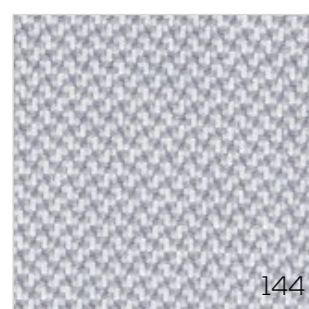
Stof : XTREME CAMIRA- 100% recycled polyester - slijtvastheid 100.000 Martindale



Stof : FIELD - 100% trevira CS - slijtvastheid 100.000 Martindale



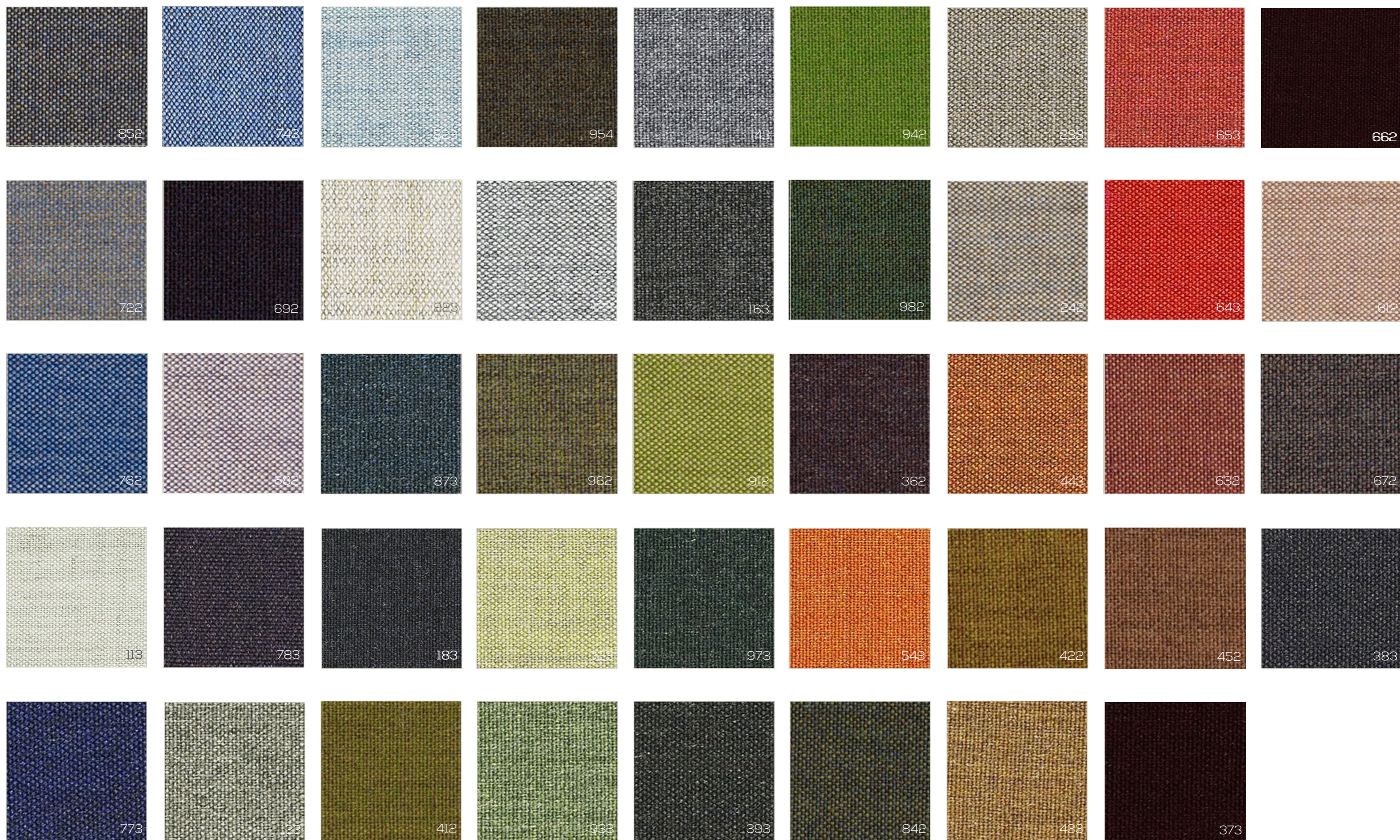
Stof : REVIVE - 100 % gerecycled polyester - slijtvastheid 60.000 Martindale



Kunstleder: STAMSKIN - 100% vinyl - Slijtvastheid 120.000 Martindale



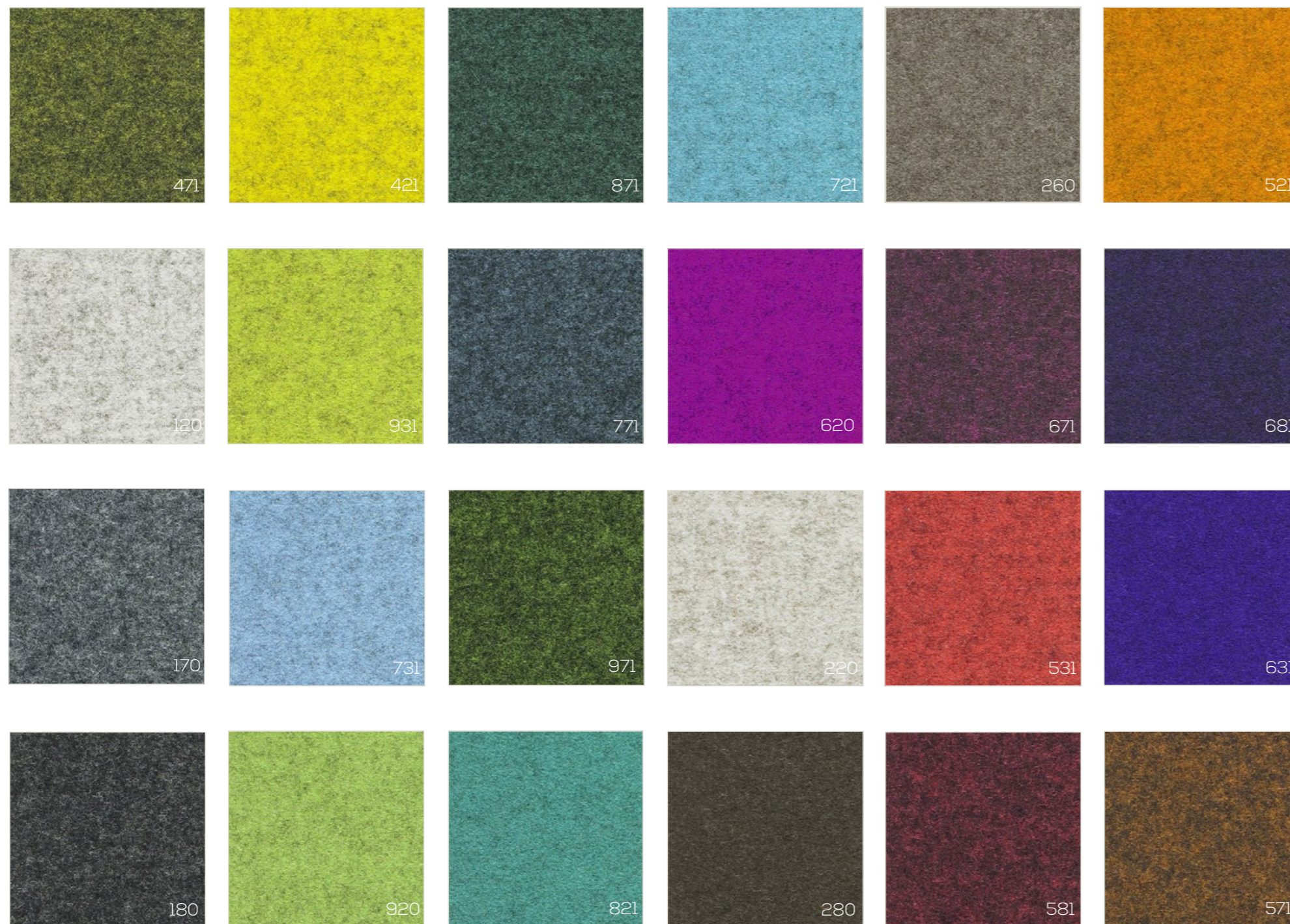
Stof : REMIX 2 KVADRAT- 90% Scheerwol - 10% nylon - slijtvastheid 100.000 Martindale



Stof : DIVINA 3 - 100% scheerwol - slijtvastheid 45.000 Martindale

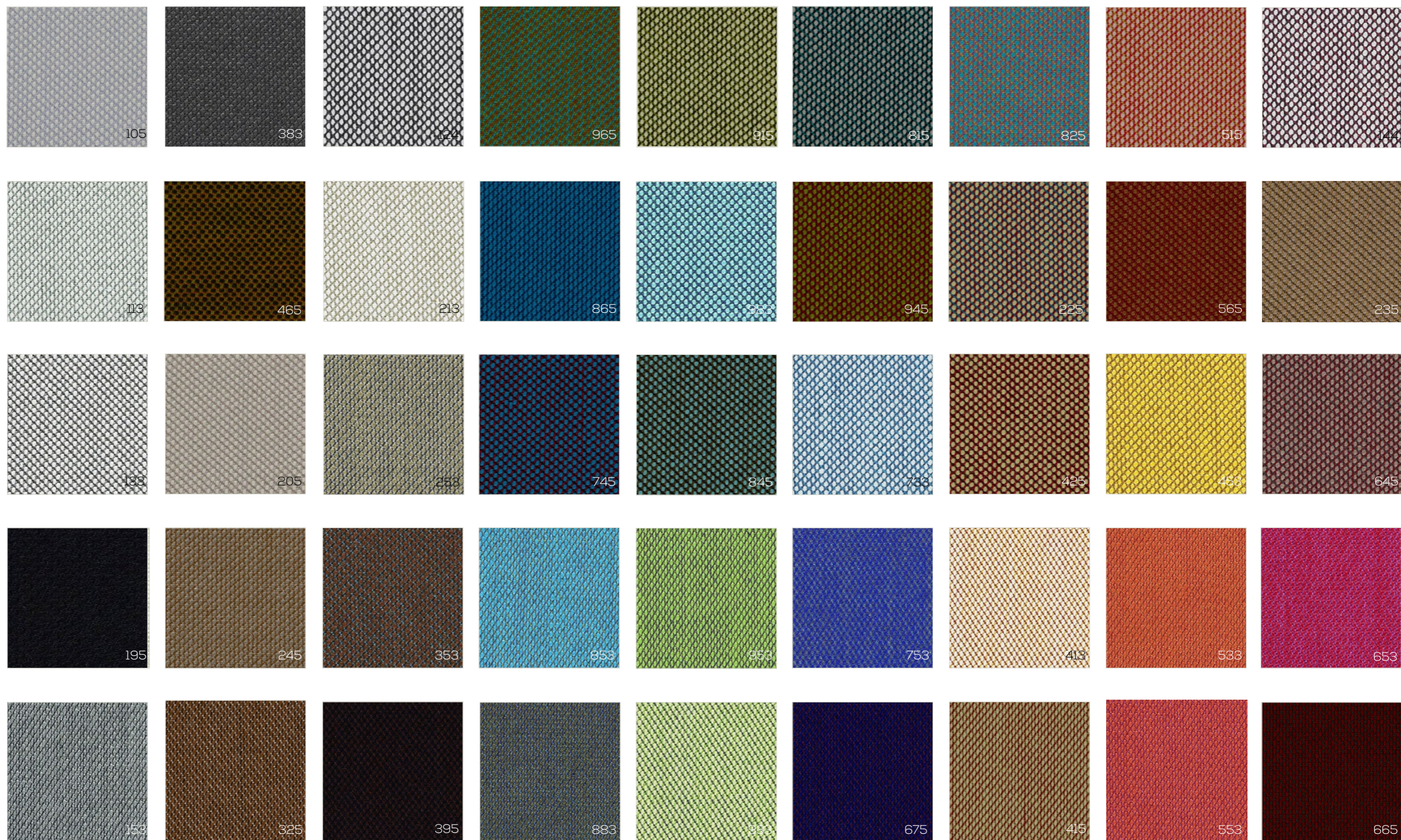


Stof : DIVINA MELANGE 2 KVADRAT - 100% Scheerwol - slijtvastheid 45.000 Martindale

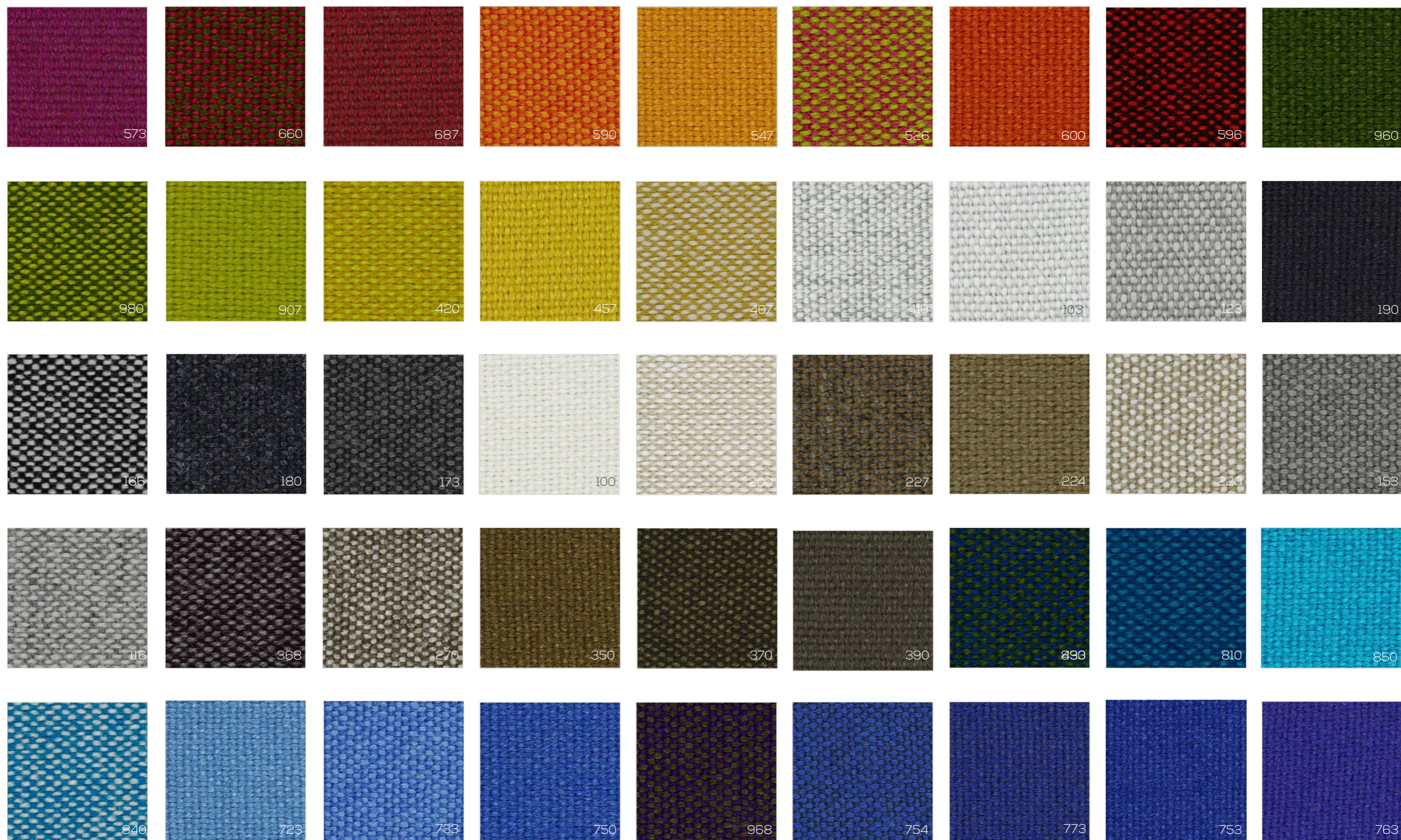




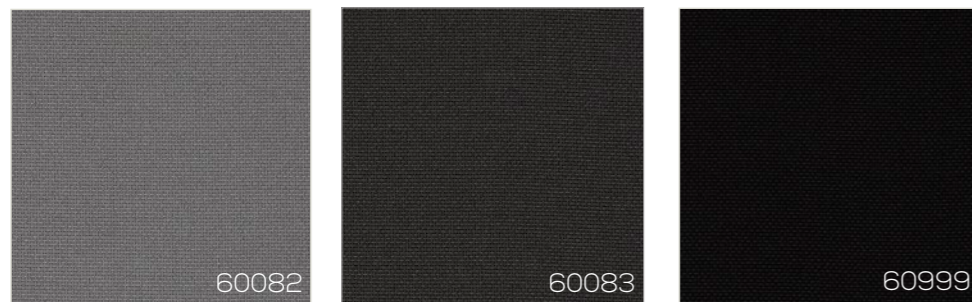
Stof : STEELCUT TRIO 2 KVADRAT - 90% Scheerwol - 10% nylon - slijtvastheid 80.000 Martindale



Stof : HALLINGDAL 65 KVADRAT - 70% Scheerwol - 30% viskose - slijtvastheid 100.000 Martindale



Stof: FIGHTER GABRIEL - 100% Polyester - Slijtvastheid 130.000 Martindale



Neem contact met ons op voor meer mogelijke stofgroepen:

- Alaska van Casala
- Dakota van Casala
- Revive 2 van Kvadrat
- Puxx van Oniro
- Georgia van Casala
- Niroxx van Oniro
- Niroxx Classic van Oniro
- Niroxx Ultra van Oniro
- Divina MD van Kvadrat
- Leather Collection van Ohmann