

## Bladdecors en bladranden



AHORN - (AH) + (QA)



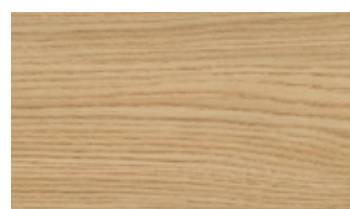
CREMA BEUKEN - (CB) + (MR)



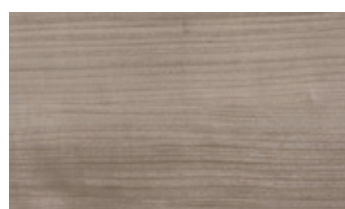
ACACIA - (AZ) + (QX)



CANDIS EIKEN - (CE) + (MS)



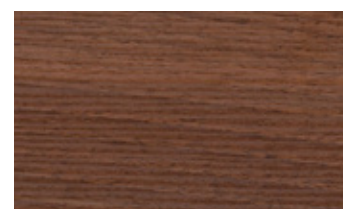
EIKEN NATUUR - (NE) + (OI)



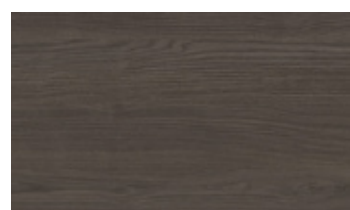
TOSKAANS NOTEN - (NB) + (QN)



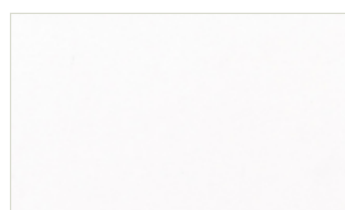
GEDEMPT BEUKEN - (BD) + (OD)



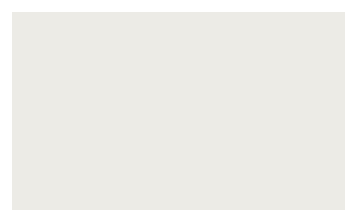
NOTEN NATUUR - (NN) + (OL)



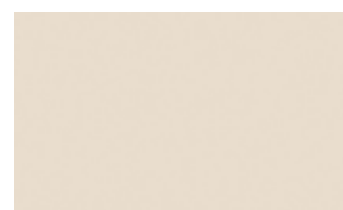
PIMENT ESSEN - (PE) + (MP)



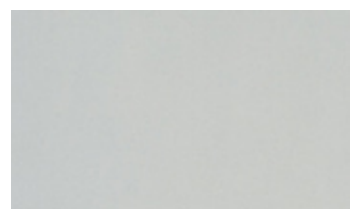
SUPERWIT - (WE) + (QW)



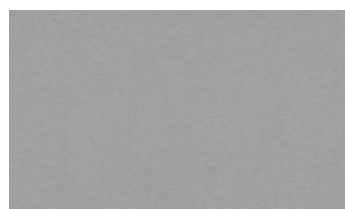
PORSELEINWIT - (WP) + (QK)



ZANDBEIGE - (SB) + (QS)



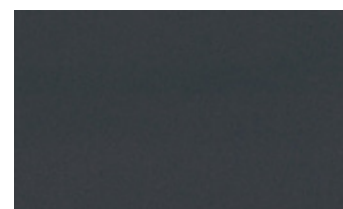
GRIJS PAREL - (GR) + (OG)



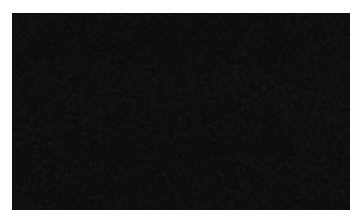
ALU GESLEPEN - (AG) + (QU)



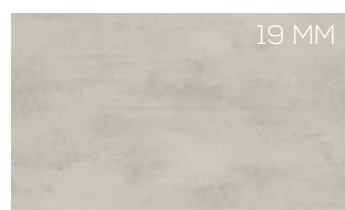
TRUFFEL - (TR) + (MT)



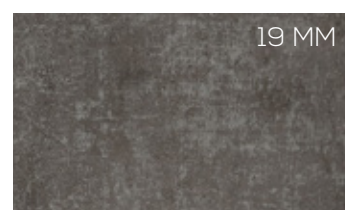
ANTRACIET - (AN) + (QR)



VULKAAN ZWART - (SV) + (QV)

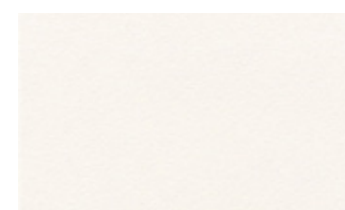


ALABASTER - (MU)

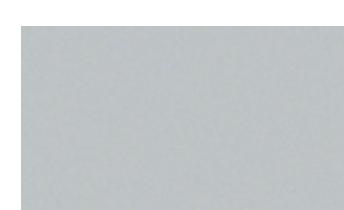


OUD METAAL - (MV)

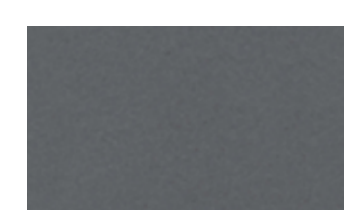
## Onderstel kleuren



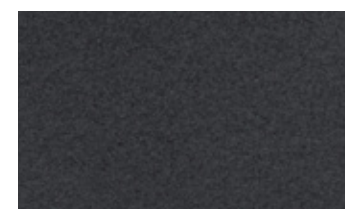
WIT - WM



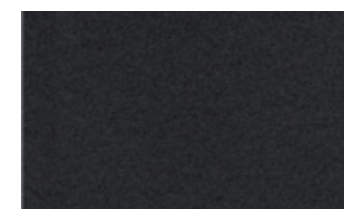
WIT ALUMINIUM - WA



ANTRACIET METALLIC - AM



ANTRACIET STRUCTUUR - AS



ZWART STRUCTUUR - SS

## Frame opties



Systo - rond



Systo - vierkant



Palmega poot

### Topbladen:

- 25 mm dikke spaanplaat met melamine oppervlakte en gelaserde randen
- 19 mm dik MDF met melamine oppervlakte en gelaserde randen

**(Alabaster (MU) en Oud Metaal (MV) alleen verkrijgbaar met een dikte van 19 mm**