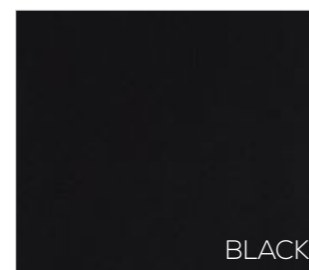
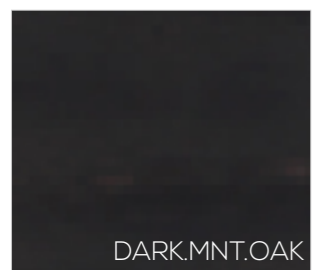
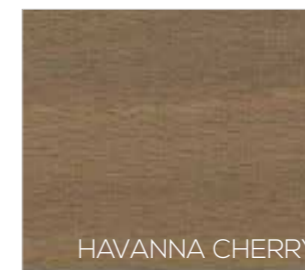
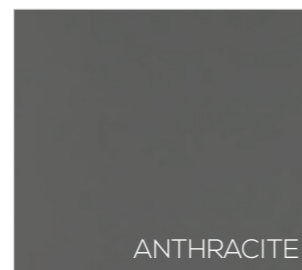
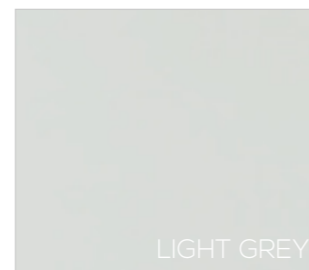
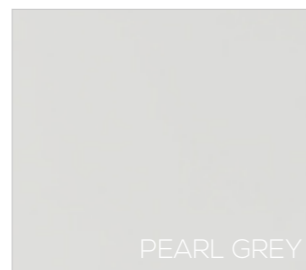
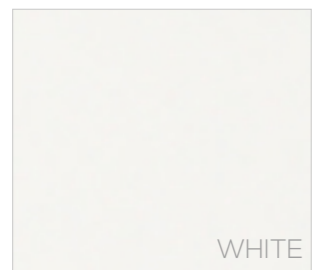


WOODY - Houtfineer

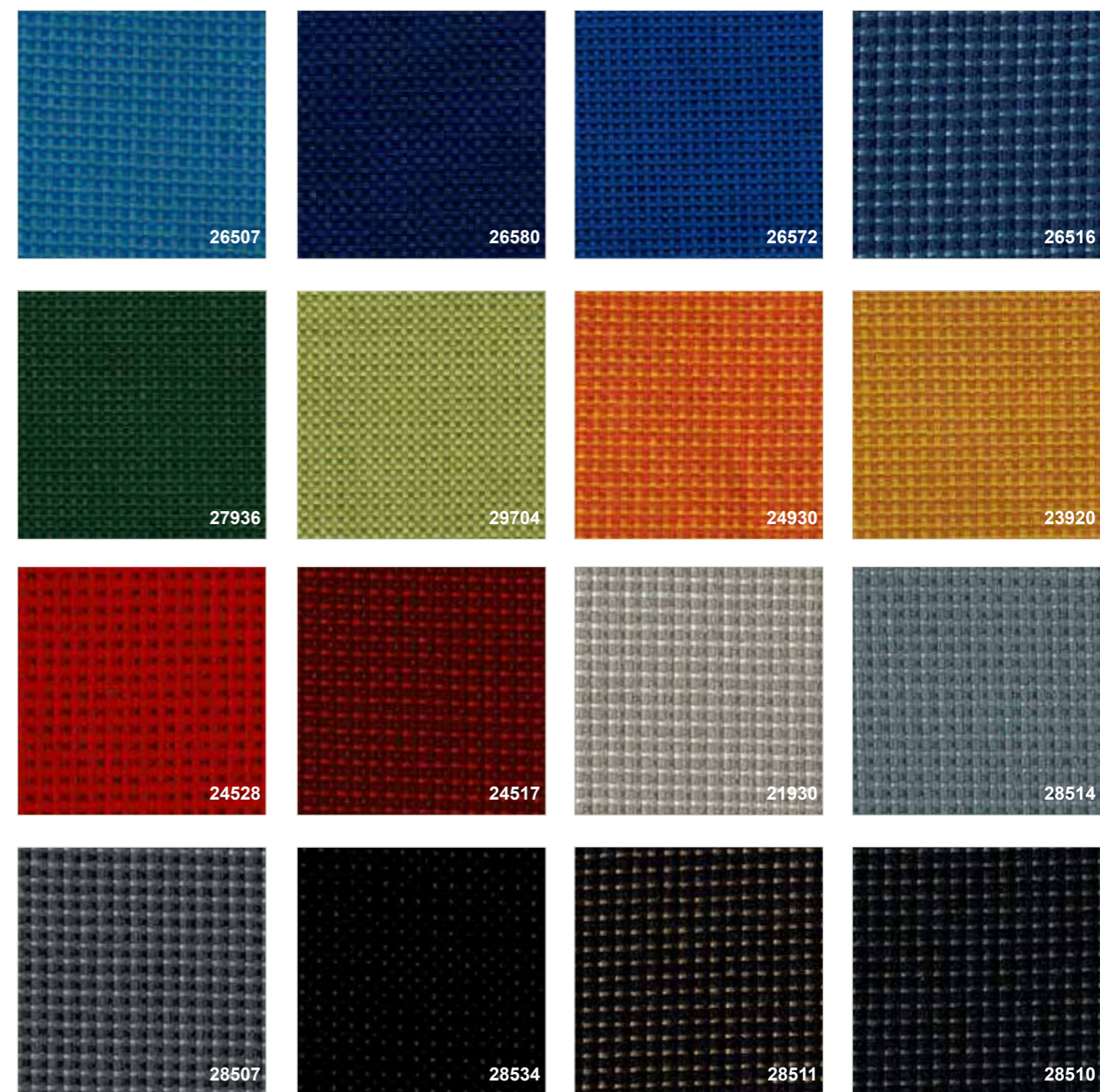
---



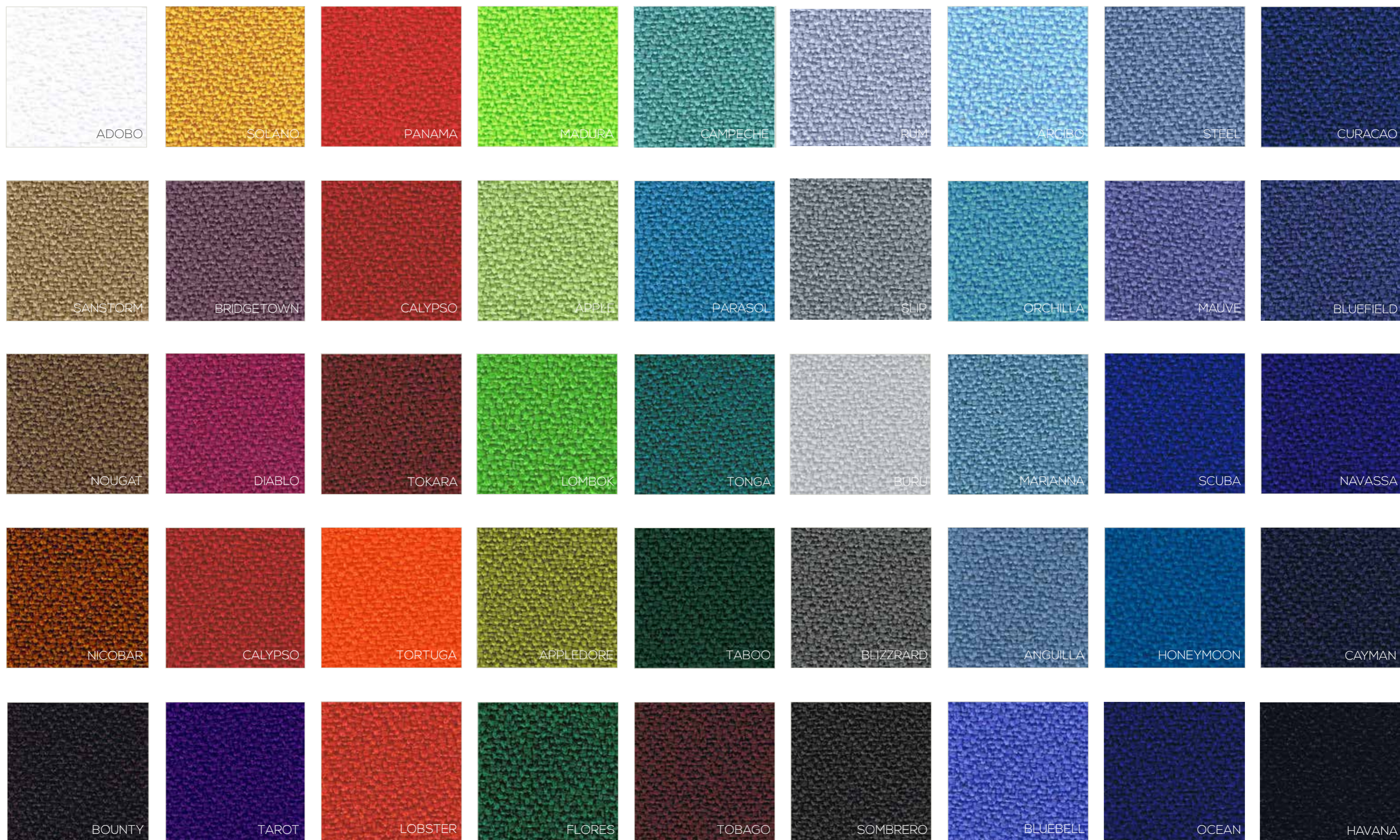
Stof 1: Arizona Casala - 100 % polyester - slijtvastheid 100.000 Martindale



Stof 2: Alaska Casala - 100 % TREVIRA CS - slijtvastheid 60.000 Martindale



Stof 2 : Xtreme Camira- 100% polyester FR - slijtvastheid 100.000 Martindale



Stof 3 : Dakota Casala - 100 % Trevira CS - slijtvastheid 80.000 Martindale



Kunstleer 3: PUxx 1 ONIRO -100 % PU, Crib5 & B1 -slijtvastheid 90.000 Martindale



Stof3 Revive1 Kvadrat 100 % recycled polyester FR slijtvastheid 60.000 Martindale



Stof3:Revive 2 Kvadrat-100 % recycled polyester FR- slijtvastheid60.000Martindale



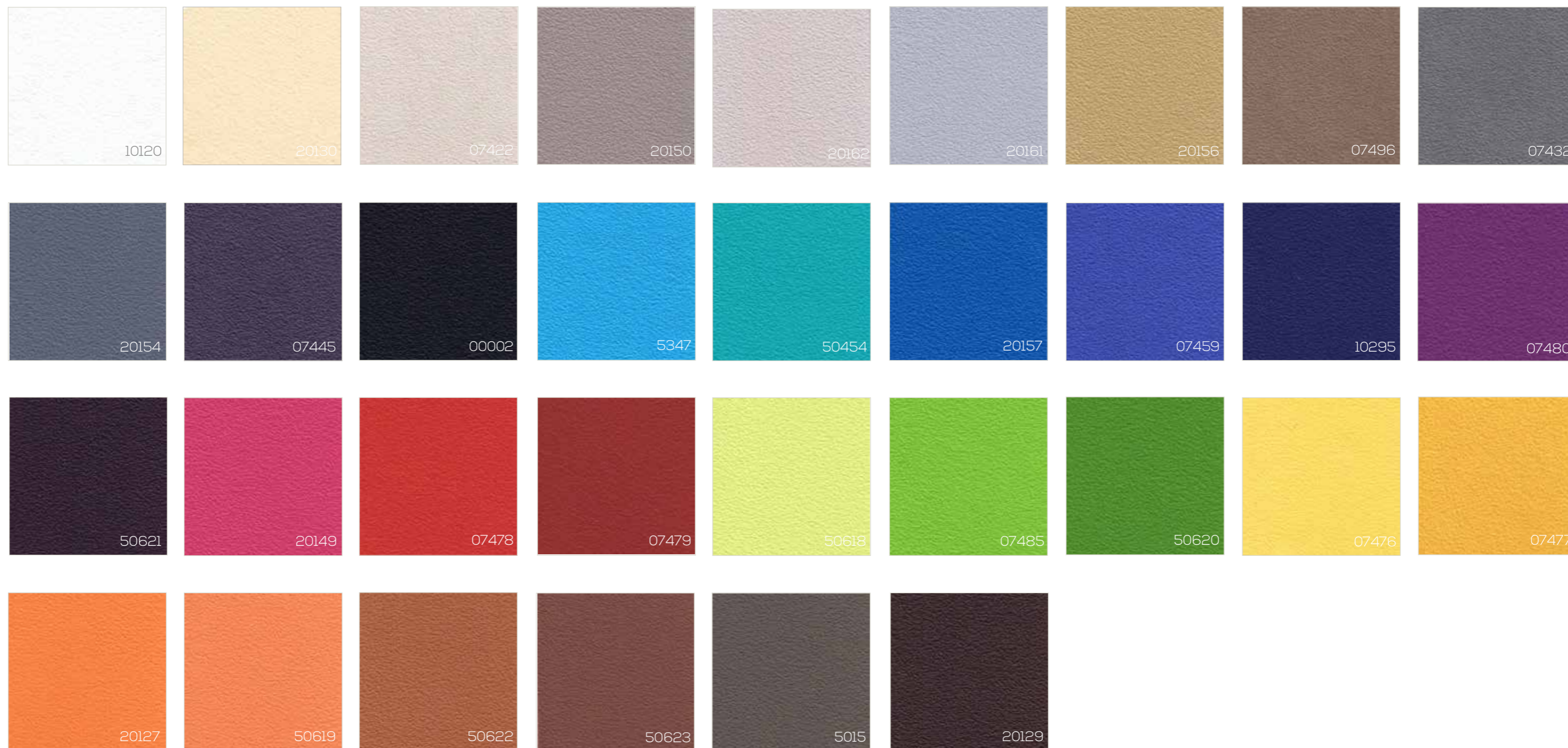
Stof 4 : Georgia Casala -100 % Trevira CS - slijtvastheid 75.000 Martindale



Stof 4 : Niroxx Oniro stripe-100 % polyester - slijtvastheid 75.000 Martindale



Kunstleder 4: Stamskin Serge Ferrari- 100% vinyl - Slijtvastheid 120.000 Martindale



Stof 4 : Remix 2 Kvadrat- 90% scheerwol - 10% nylon - slijtvastheid 100.000 Martindale





Stof 5 : Divina Kvadrat - 100% scheerwol - slijtvastheid 45.000 Martindale



Stof 5 : Divina Melange Kvadrat - 100% scheerwol - slijtvastheid 45.000 Martindale



Stof 5 : Steelcut Trio 2 Kvadrat - 90% scheerwol kamgaren - 10% nylon - slijtvastheid 80.000 Martindale



Stof 6 : Hallingdal Kvadrat - 70% scheerwol - 30% viscose - slijtvastheid 100.000 Martindale



Leder : Leder collection 1012 Ohmann - 100% Leer

